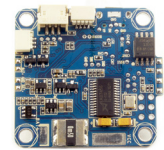
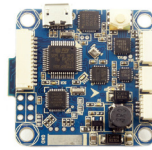
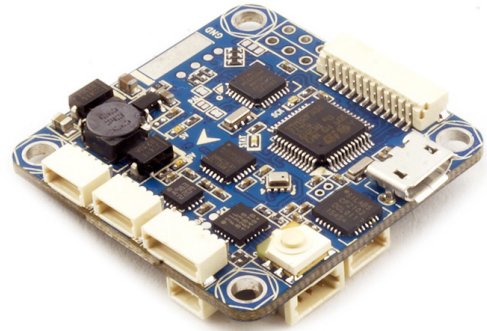


# F3S AIO v1.0

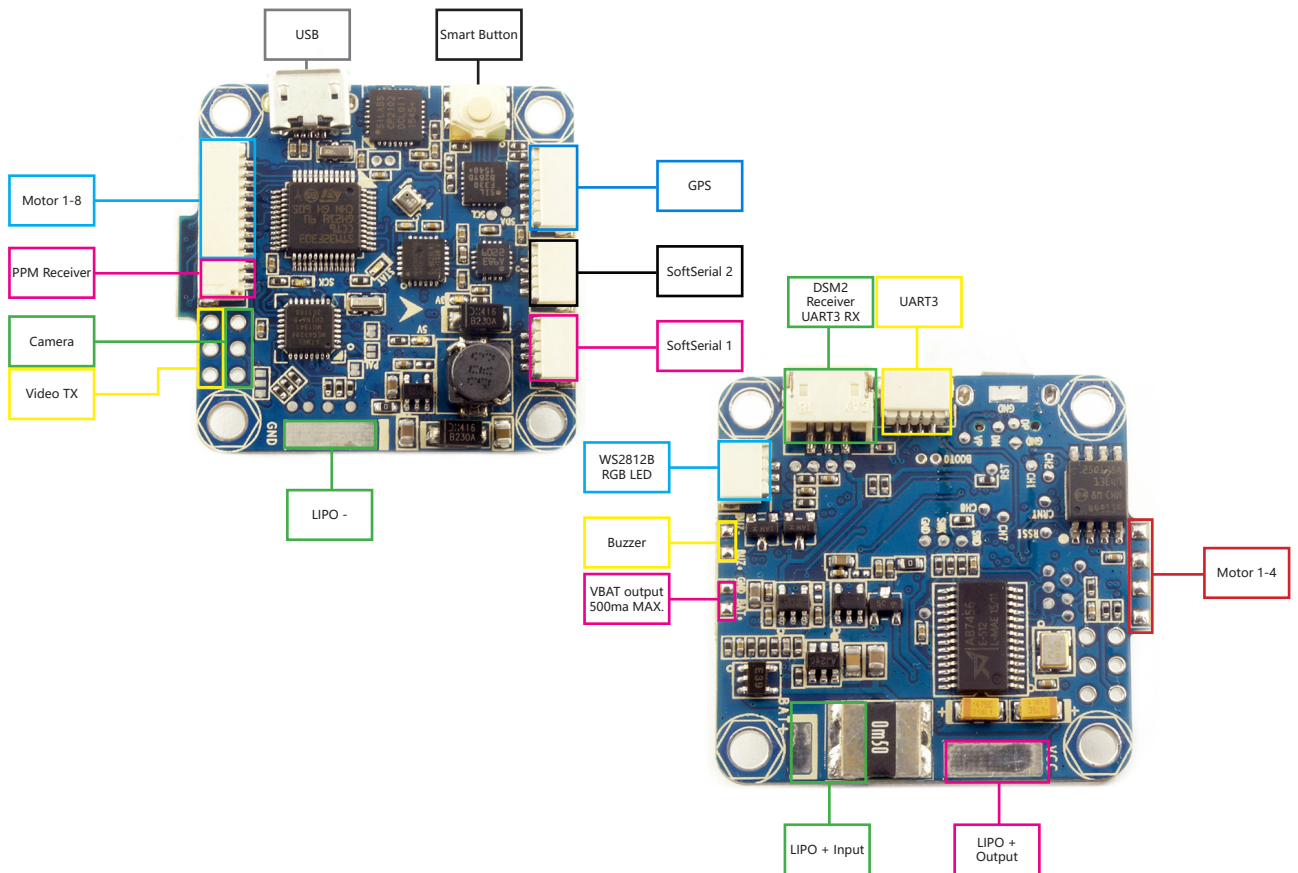
Upgraded AIO FC, based on F302 MCU, incl. F3 FC / OSD / USB / Blackbox / Current Sensor / BEC / Compass / Baro in 35x35mm Board. Compare to F1 MCU, it supports more UART, runs faster and has Blackbox.

The Connection between FC-OSD-USB will be managed automatically, NO DIP SWITCH needed

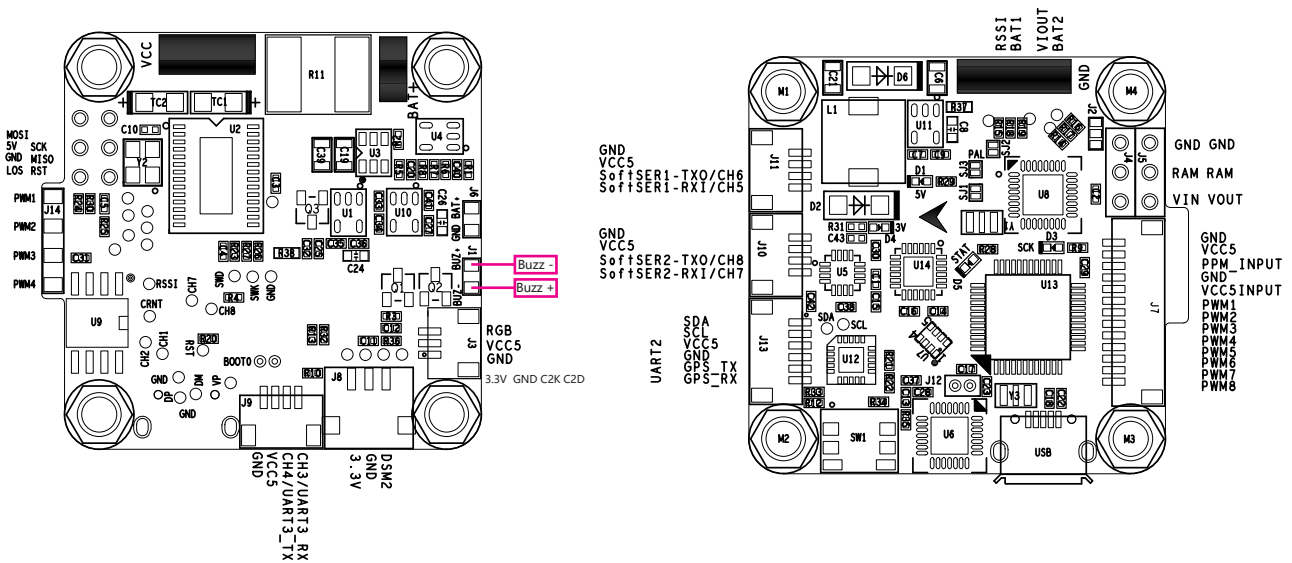
- STM32 F303 MCU, Runs Cleanflight firmware
- Barometer BMP280
- Compass HMC5983L
- MPU6050
- 8PWM output as PLUG, 4x PWM output as Solder pads
- Only 35x35mm, mount holes 30x30mm
- 128Mb Flash(16M Byte)
- 5v 2A BEC (up to 4s)
- Current and voltage sensor incl.
- Smart button instead of DIP switch



## Connection example



# Pin map



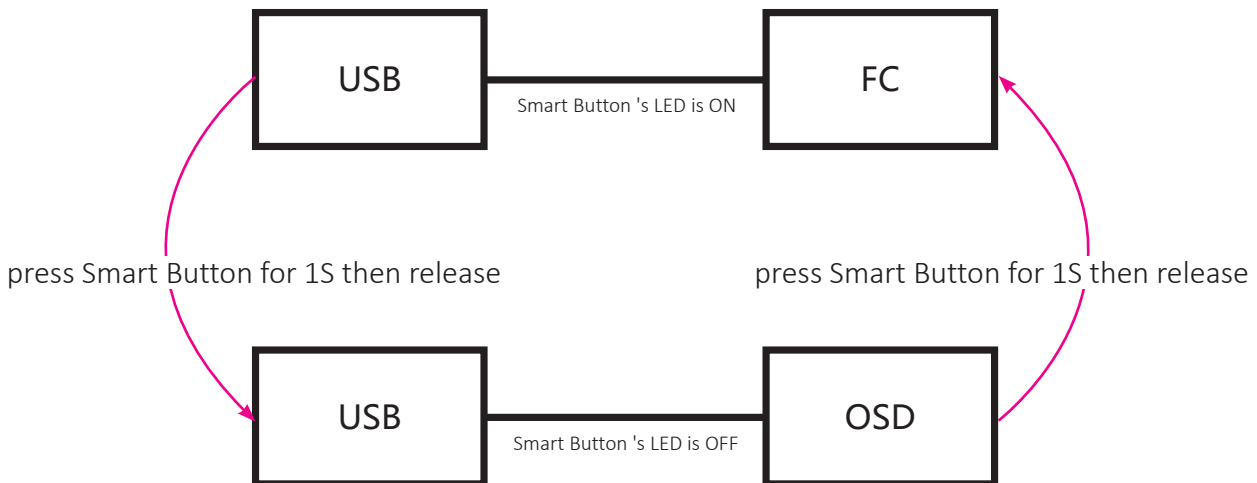
## Smart connection

When powered by LIPO(no USB cable attached)



Smart Button 's LED is ON

When USB cable plug in, the USB will connect to FC automatically, you can change the connect to "USB-OSD" by press Smart Button for 1S then release when USB cable plugged in.(Then LED shows OFF)



## RCG Thread:

<http://www.rcgroups.com/forums/showthread.php?t=2690427>

